



# Plan Guide 2024

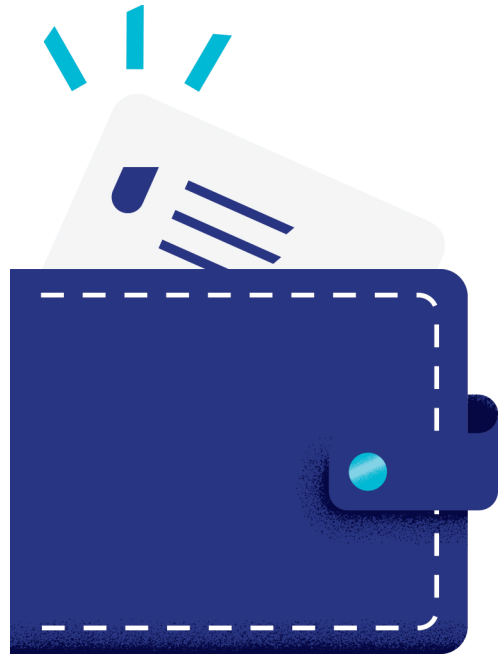
**Take advantage of all your  
Medicare Advantage plan has to  
offer**

**Chicago Teachers' Pension Fund**

UnitedHealthcare® Group Medicare Advantage (PPO)

**Group Number:** 12830

**Effective:** January 1, 2024 through December 31, 2024



**United  
Healthcare®**  
Group Medicare Advantage



# Table of Contents

Introduction ..... 3

## Plan information

Benefit highlights ..... 6  
Plan details ..... 9  
Summary of benefits ..... 17

## What's next

Here's what you can expect next ..... 34  
Statements of understanding ..... 35

# Introducing the Plan

## UnitedHealthcare® Group Medicare Advantage (PPO) plan

Dear CTPF Member,

Chicago Teachers' Pension Fund (CTPF) has selected UnitedHealthcare® Group Medicare Advantage (PPO) plan as one of the health care coverage plans available to all eligible retirees. As a UnitedHealthcare Medicare Advantage Group plan member, you'll have a team committed to understanding your needs as a group retiree and helping you get the right care.

### Let us help you:

- Get tools and resources to help you be in more control of your health
- Find ways to save money on health care so you can focus more on what matters to you
- Get access to care when you need it

Visit our self-guided Virtual Education Center designed for members to learn about their plan and the benefits available to you at:

[www.uhcvirtualretiree.com/ctpf](http://www.uhcvirtualretiree.com/ctpf)

### In this book, you will find:

- A description of this plan and how it works
- Information on benefits, programs and services — and how much they cost
- What you can expect after your enrollment

### How to enroll

If you would like to enroll in the UnitedHealthcare® Group Medicare Advantage (PPO) plan, just follow CTPF's instructions. Complete the CTPF enrollment form 350 and return it to CTPF. CTPF will send your enrollment to UnitedHealthcare for processing.

You can get 2024 plan information online by going to the website below. To access plan materials, visit the Coverage and benefits page.

We look forward to the opportunity to serve you in 2024.

### Questions? We're here to help.

Please note, Customer Service hours of operation will be **7 days a week October 15 – December 7**.

 [retiree.uhc.com/CTPF](http://retiree.uhc.com/CTPF)

 Call toll-free **1-866-572-9396**, TTY **711**,  
8 a.m.–8 p.m. local time, Monday–Friday

**Take advantage of  
healthy extras with  
UnitedHealthcare**



**HouseCalls**



**Fitness Program**



**Health & Wellness  
Experience**

This page left intentionally blank.

# **Plan information**

# Benefit Highlights

## Chicago Teachers' Pension Fund 12830

Effective January 1, 2024 to December 31, 2024

This is a short summary of your plan benefits and costs. See your Summary of Benefits for more information. Or review the Evidence of Coverage for a complete description of benefits, limitations, exclusions and restrictions. Benefit limits and restrictions are combined in- and out-of-network.

### Plan costs

	In-network and out-of-network
<b>Annual medical deductible</b>	Your plan has an annual combined in-network and out-of-network medical deductible of \$175 for this plan year.
<b>Annual out-of-pocket maximum (the most you pay in a plan year for covered medical care)</b>	Your plan has an annual combined in-network and out-of-network out-of-pocket maximum of \$1,500 for this plan year.

### Medical benefits

Medical benefits covered by the plan and Original Medicare

	In-network and out-of-network
<b>Doctor's office visit</b>	
Primary care provider (PCP)	\$0 copay
Specialist	\$0 copay
Virtual visits	\$0 copay
<b>Preventive services</b> Medicare-covered	\$0 copay
<b>Inpatient hospital care</b>	\$0 copay per stay
<b>Skilled nursing facility (SNF)</b>	\$0 copay per day: days 1-20 \$0 copay per additional day up to 100 days
<b>Outpatient surgery</b>	\$0 copay
<b>Outpatient rehabilitation</b> Physical, occupational, or speech/ language therapy	\$0 copay
<b>Outpatient mental health</b>	
Group therapy	\$0 copay
Individual therapy	\$0 copay
Virtual visits	\$0 copay
<b>Diagnostic radiology services</b> such as MRIs, CT scans	\$0 copay

## Medical benefits

Medical benefits covered by the plan and Original Medicare

	In-network and out-of-network
<b>Lab services</b>	\$0 copay
<b>Outpatient X-rays</b>	\$0 copay
<b>Therapeutic radiology services</b> such as radiation treatment for cancer	\$0 copay
<b>Ambulance</b>	\$0 copay
<b>Emergency care</b>	\$50 copay (worldwide)
<b>Urgently needed services</b>	\$0 copay (worldwide)

## Additional benefits and programs not covered by Original Medicare

	In-network and out-of-network
<b>Routine physical</b>	\$0 copay; 1 per plan year*
<b>Foot care – routine</b>	\$0 copay, 6 visits per plan year*
<b>Over-the-counter (OTC) card</b> Healthy Benefits Plus	\$0 copay  \$60 credit each quarter (\$240 a year) to purchase approved OTC items from network retail locations or through the OTC catalog.
<b>UnitedHealthcare</b> Healthy at Home post-discharge program	\$0 copay for 28 meals, 12 rides (one-way), and 6 hours of non-medical personal care up to 30 days following all inpatient and SNF discharges. Referral required.
<b>Hearing – routine exam</b>	\$0 copay, 1 exam per plan year*
<b>Hearing aids</b> UnitedHealthcare Hearing	Plan pays a \$1,000 allowance for hearing aids (combined for both ears) every 3 years. Hearing aids purchased outside of UnitedHealthcare Hearing's nationwide network are not covered.
<b>Vision – routine eye exam</b>	\$0 copay, 1 exam every 12 months*
<b>Vision – routine eyewear</b>	Plan pays \$300 combined allowance for eyeglasses and contact lenses every 12 months.*
<b>Fitness program</b> Renew Active® by UnitedHealthcare	\$0 copay for a standard gym membership at participating locations
<b>24/7 Nurse Support</b>	Receive access to nurse consultations and additional clinical resources at no additional cost.
<b>Personal emergency response system (PERS)</b> Lifeline	\$0 copay for a personal emergency response system.

	<b>In-network and out-of-network</b>
<b>Rally Coach™ programs</b>	<p>\$0 copay for the Rally Coach™ Programs: Real Appeal® Weight Management, Real Appeal Diabetes Prevention, Wellness Coaching and a tobacco cessation program.</p> <p>*Refer to your Evidence of Coverage for eligibility requirements.</p>

\*Benefits are combined in and out-of-network

Retiree plan prospects must meet the eligibility requirements to enroll for group coverage. This information is not a complete description of benefits. Contact the plan for more information. Limitations, copayments, and restrictions may apply. Benefits, premium and/or copayments/coinsurance may change each plan year. The provider network may change at any time. You will receive notice when necessary.



# Plan Details

## UnitedHealthcare® Group Medicare Advantage (PPO)

Chicago Teachers' Pension Fund (CTPF) has selected UnitedHealthcare Group Medicare Advantage plan as one of the health care coverage plans available to all eligible retirees. The word "Group" means this is a plan designed just for a former employer or plan sponsor. Only eligible retirees of plan sponsor can enroll in this plan.

"Medicare Advantage" is also known as Medicare Part C. These plans have all the benefits of Medicare Part A (hospital coverage) and Medicare Part B (doctor and outpatient care) plus extra programs that go beyond Original Medicare (Medicare Parts A and B).

CTPF will continue to provide Medicare Part D prescription drug coverage through Express Scripts. If you enroll in an individual Medicare Part D prescription drug plan, you will be disenrolled from your employer group or plan sponsored UnitedHealthcare Group Medicare Advantage (PPO) plan.



### Make sure you know what parts of Medicare you have

You must be enrolled to Medicare Part A and enrolled in Medicare Part B to enroll in this plan.

- If you're not sure if you are enrolled in Medicare A or Medicare Part B, check with Social Security
- Visit [www.ssa.gov/locator](http://www.ssa.gov/locator) or call **1-800-772-1213**, TTY **1-800-325-0778**, 8 a.m.–7 p.m., Monday–Friday, or call your local office
- You must continue paying your Medicare Part B premium and Medicare Part A premium, to be eligible for coverage under this group-sponsored plan
- If you stop paying your Medicare Part B premium, you may be disenrolled from this plan

## Medicare Advantage Coverage:



**Medicare Part A**  
Hospital

+



**Medicare Part B**  
Doctor and Outpatient

+



**Extra Programs**  
Beyond Original Medicare

# How your Group Medicare Advantage plan works

Medicare has rules about what types of coverage you can add or combine with a group-sponsored Medicare Advantage plan.

## ✓ **One plan at a time**

- You may be enrolled in only one Medicare Advantage plan at a time.
- The plan you enroll in last is the plan that the Centers for Medicare & Medicaid Services (CMS) considers to be your final decision.
- If you enroll in another Medicare Advantage plan after your enrollment in this group-sponsored plan, you will be disenrolled from this plan.
- Any eligible family members may also be disenrolled from this group-sponsored plan. This means that you and your family may not have hospital/medical coverage through your plan sponsor.

## ✓ **You must have employer group-sponsored coverage**

Your UnitedHealthcare Group Medicare Advantage (PPO) plan includes only medical coverage. It does not include prescription drug coverage. CTPF will continue to provide Medicare Part D prescription drug coverage through Express Scripts.

- If you enroll in an individual Part D prescription drug plan, you will be disenrolled from your former employer or plan sponsored UnitedHealthcare Group Medicare Advantage (PPO) plan.



**Remember:** If you drop or are disenrolled from your group-sponsored retiree coverage, you may not be able to re-enroll. Limitations and restrictions vary by plan sponsor.

## Questions? We're here to help.

Please note, Customer Service hours of operation will be **7 days a week October 15 – December 7**.



[retiree.uhc.com/CTPF](https://retiree.uhc.com/CTPF)



Call toll-free **1-866-572-9396**, TTY **711**,  
8 a.m.–8 p.m. local time, Monday–Friday

## How your medical coverage works

### Your plan is a Preferred Provider Organization (PPO) plan

You have access to our nationwide coverage. You can see any provider (in-network or out-of-network) at the same cost share as long as they accept the plan and have not opted out of or been excluded or precluded from the Medicare Program.

	In-network	Out-of-network
<b>Can I continue to see my doctor/specialist?</b>	Yes	Yes, as long as they participate in Medicare and accept the plan <sup>1</sup>
<b>What is my copay or coinsurance?</b>	Copays and coinsurance vary by service <sup>2</sup>	Copays and coinsurance vary by service <sup>2</sup>
<b>Do I need to choose a primary care provider (PCP)?</b>	No, but recommended	No, but recommended
<b>Do I need a referral to see a specialist?</b>	No	No
<b>Can I go to any hospital?</b>	Yes	Yes, as long as they participate in Medicare and accept the plan <sup>1</sup>
<b>Are emergency and urgently needed services covered?</b>	Yes	Yes
<b>Do I have to pay the full cost for all doctor or hospital services?</b>	You will pay your standard copay or coinsurance for the services you get <sup>2</sup>	You will pay your standard copay or coinsurance for the services you get <sup>2</sup>
<b>Is there a limit on how much I can spend on medical services each year?</b>	Yes <sup>2</sup>	Yes <sup>2</sup>
<b>Are there any situations when a doctor will balance bill me?</b>	Under this plan, you are not responsible for any balance billing when seeing health care providers who have not opted out of or been excluded or precluded from the Medicare Program	

### View Your Plan Information Online

Once you receive your UnitedHealthcare member ID card, you can create your secure online account at: [retiree.uhc.com/CTPF](https://retiree.uhc.com/CTPF)

You'll be able to view plan documents, find a provider, and access lifestyle and learning articles, recipes, educational videos and more.

<sup>1</sup>This means that the provider or hospital agrees to treat you and be paid according to UnitedHealthcare's payment schedule. With this plan, we pay the same as Medicare and follow Medicare's rules. Emergencies would be covered even if out-of-network.

<sup>2</sup>Refer to the Summary of Benefits or Benefit Highlights in this guide for more information.

# Getting the health care coverage you may need

## Your care begins with your doctor

- With this plan, you have the flexibility to see doctors inside or outside the UnitedHealthcare network
- Even though it's not required, it's important to have a primary care provider
- Unlike most PPO plans, with this plan, you pay the same share of cost in and out of the network as long as they participate in Medicare and have not been excluded or precluded from the Medicare Program
- With your UnitedHealthcare Group Medicare Advantage plan, you're connected to programs, resources, tools and people that can help you live a healthier life

## Finding a doctor is easy

If you need help finding a doctor or specialist, just give us a call. We can even help schedule that first appointment.

### Why use a UnitedHealthcare network doctor?

**A network doctor or health care provider** is one who contracts with us to provide services to our members. We work closely with our network of doctors to give them access to resources and tools that can help them work with you to make better health care decisions. You pay your copay or coinsurance according to your plan benefits. Your provider will bill us for the rest.

**An out-of-network provider** does not have a contract with us. With the UnitedHealthcare Group Medicare Advantage (PPO) plan, you can see any out-of-network provider as long as they accept the plan and have not opted out of or been excluded or precluded from the Medicare Program. We will pay for the rest of the cost of your covered service(s), including any charges up to the limit set by Medicare. If your provider won't accept the plan, we will contact them on your behalf.

**If a provider refuses to directly bill us**, they may ask that you pay the full allowable amount upfront. In that case, you can pay the doctor and then submit a claim to us. You'll be reimbursed for the cost of the claim minus your cost share.

## Take advantage of UnitedHealthcare's additional support and programs



### Annual Physical and Wellness Visit<sup>1</sup>

An Annual Wellness Visit with your doctor and many preventive services at \$0 copay is one of the best ways to start your year off and stay on top of your health. Take control by scheduling your annual physical and wellness visit early in the year to give you the most time to take action. You and your doctor can work as a team to create a preventive care plan, review medications and talk about any health concerns. **You may also be eligible to earn a reward\* for completing and reporting your Annual Wellness Visit.**



### In-Home Preventive Care Visit from UnitedHealthcare® HouseCalls

With UnitedHealthcare® HouseCalls<sup>2</sup>, you get a yearly in-home visit from one of our health care practitioners at no extra cost to you. A HouseCalls visit is designed to support, but not take the place of, your regular doctor's care.

**The visit takes up to an hour and is tailored to your needs. It includes health screenings and a chance to:**

- Review current medications
- Receive education, prevention tips, care and resource assistance, if needed
- Get advice and ask questions on how to manage health conditions
- Receive referrals to other health services and more

At the end of the visit, our health care practitioner will leave a personalized checklist and send a summary to your regular doctor.



### 24/7 Nurse Support<sup>3</sup>

Speak to a registered nurse 24/7 over the phone about your medical concerns at no additional cost to you.



### Chronic Conditions Programs

UnitedHealthcare offers special programs to help members who are living with a chronic disease like diabetes or heart disease or complex health needs. You get personal attention and your doctors get up-to-date information to help them make decisions.



## Virtual Visits

See a doctor or a behavioral health specialist using your computer, tablet or smartphone. With Virtual Visits, you're able to live video chat — anytime, day or night. You will first need to register and then schedule an appointment. On your tablet or smartphone, you can download the Amwell®, Doctor On Demand™ and Teladoc® (medical visits only) apps.

### Virtual Doctor Visits

You can ask questions, get a diagnosis or even get medication prescribed and have it sent to your pharmacy. All you need is a strong internet connection. Virtual doctor visits may be good for minor health concerns like:

- Allergies, bronchitis, cold/cough
- Fever, seasonal flu, sore throat
- Migraines/headaches, sinus problems, stomachache
- Bladder/urinary tract infections, rashes

### Virtual Behavioral Health Visits

May be best for:

- Initial evaluation
- Behavioral Health medication management
- Addiction
- Depression
- Trauma and loss
- Stress or anxiety



## Custom-Programmed Hearing Aids

Your hearing health is important to your overall well-being and can help you stay connected to those around you. With UnitedHealthcare Hearing, you'll get access to hundreds of name-brand and private-labeled hearing aids — available in person at any of our 7,000+<sup>4</sup> UnitedHealthcare Hearing providers nationwide<sup>5</sup> or delivered to your doorstep with direct delivery and virtual care (select products only) — so you'll get the care you need to hear better and live life to the fullest.



## Over-the-Counter (OTC) Products

With Healthy Benefits Plus, you'll get one pre-paid debit card at the start of the plan year to purchase eligible OTC items at participating retail locations, online, over the phone or by mail through your OTC catalog.



## Stay Healthy at Home

UnitedHealthcare® Healthy at Home provides you with the support you may need to recover from hospital and skilled nursing facility stays. You are eligible to receive home-delivered meals, transportation to medical appointments and in-home personal care to assist with daily activities, all at no cost to you.



### **UnitedHealthcare Fitness Program**

Renew Active® is the gold standard in Medicare fitness programs for body and mind, available at no additional cost. You'll receive a free gym membership with access to our nationwide network of gyms and fitness locations. This includes access to many premium gyms, on-demand workout videos and live streaming fitness classes, social activities, an online Fitbit® Community for Renew Active (no Fitbit device is needed) and an online brain health program from AARP® Staying Sharp®.



### **And so much more to help you live a healthier life**

After you become a member, we will connect you to many programs and tools that may help you on your wellness journey. You will get information soon after your coverage becomes effective.

# Tools and resources to help put you in control



## Go online for valuable plan information

As a UnitedHealthcare member, you will have access to a safe, secure website where you'll be able to:

- Look up your latest claim information
- Review benefit information and plan materials
- Print a temporary ID card and request a new one
- Search for network doctors
- Learn more about health and wellness topics and explore all Renew has to offer based on your interests and goals
- Sign up to get your Explanation of Benefits online

Visit our self-guided Virtual Education Center designed for members to learn about their plan and the benefits available to you at: [www.uhcvirtualretiree.com/ctpf](http://www.uhcvirtualretiree.com/ctpf)



## Live Healthier with Renew

Explore Renew by UnitedHealthcare,<sup>®5</sup> our member-only health and wellness experience. Renew helps inspire you to take charge of your health and wellness every day by providing a wide variety of useful resources and activities, including:

- Brain games, healthy recipes, fitness activities, learning courses and more — all at no additional cost

<sup>1</sup>A copay or coinsurance may apply if you receive services that are not part of the Annual Physical/Wellness Visit.

<sup>2</sup>HouseCalls may not be available in all areas.

<sup>3</sup>24/7 Nurse Support should not be used for emergency or urgent care needs. In an emergency, call 911 or go to the nearest emergency room. The information provided through this service is for informational purposes only. The nurses cannot diagnose problems or recommend treatment and are not a substitute for your provider's care. Your health information is kept confidential in accordance with the law. Access to this service is subject to terms of use.

<sup>4</sup>2022 Internal Data.

<sup>5</sup>Please refer to your Summary of Benefits for details regarding your benefit coverage.

<sup>6</sup>Renew by UnitedHealthcare is not available in all plans.

\*Reward offerings will vary by member and terms of participation apply. Rewards are not available in all plans.

Benefits, features and/or devices vary by plan/area. Limitations and exclusions apply.

© 2023 United HealthCare Services, Inc. All Rights Reserved.





# Summary of Benefits 2024

## UnitedHealthcare® Group Medicare Advantage (PPO)

Group Name (Plan Sponsor): Chicago Teachers' Pension Fund

Group Number: 12830

H2001-817-000

Look inside to learn more about the plan and the health services it covers.  
Call Customer Service or go online for more information about the plan.



Toll-free **1-866-572-9396**, TTY **711**

8 a.m.-8 p.m. local time, Monday-Friday



**[retiree.uhc.com/CTPF](https://retiree.uhc.com/CTPF)**

**United  
Healthcare®**  
Group Medicare Advantage

# Summary of Benefits

**January 1, 2024 - December 31, 2024**

This is a summary of what we cover and what you pay. Review the Evidence of Coverage (EOC) for a complete list of covered services, limitations and exclusions. You can call Customer Service if you want a copy of the EOC or need help. When you enroll in the plan, you will get more information on how to view your plan details online.

## UnitedHealthcare® Group Medicare Advantage (PPO)

Medical premium, deductible and limits	
	In-network and out-of-network
<b>Monthly plan premium</b>	Contact your group plan benefit administrator to determine your actual premium amount, if applicable.
<b>Annual medical deductible</b>	Your plan has an annual combined in-network and out-of-network medical deductible of \$175 each plan year.
<b>Maximum out-of-pocket amount</b>	<p>Your plan has an annual combined in-network and out-of-network out-of-pocket maximum of \$1,500 for this plan year.</p> <p>If you reach the limit on out-of-pocket costs, you keep getting covered hospital and medical services and we will pay the full cost for the rest of the plan year.</p> <p>Please note that you will still need to pay your monthly premiums, if applicable.</p>

Medical benefits		
	In-network and out-of-network	
<b>Inpatient hospital care<sup>1</sup></b>		\$0 copay per stay
		Our plan covers an unlimited number of days for an inpatient hospital stay.
<b>Outpatient hospital<sup>1</sup></b>	Ambulatory surgical center (ASC)	\$0 copay
Cost sharing for additional plan covered services will apply.	Outpatient surgery	\$0 copay
	Outpatient hospital services, including observation	\$0 copay
<b>Doctor visits</b>	Primary care provider	\$0 copay
	Virtual doctor visits	\$0 copay
	Specialists <sup>1</sup>	\$0 copay
<b>Preventive services</b>	Routine physical	\$0 copay; 1 per plan year*
	Medicare-covered	\$0 copay
	<ul style="list-style-type: none"> <li>□ Abdominal aortic aneurysm screening</li> <li>□ Alcohol misuse counseling</li> <li>□ Annual wellness visit</li> <li>□ Bone mass measurement</li> <li>□ Breast cancer screening (mammogram)</li> <li>□ Cardiovascular disease (behavioral therapy)</li> <li>□ Cardiovascular screening</li> <li>□ Cervical and vaginal cancer screening</li> <li>□ Colorectal cancer screenings (colonoscopy, fecal occult blood test, flexible sigmoidoscopy)</li> </ul>	<ul style="list-style-type: none"> <li>□ Depression screening</li> <li>□ Diabetes screenings and monitoring</li> <li>□ Diabetes – Self-Management training</li> <li>□ Dialysis training</li> <li>□ Glaucoma screening</li> <li>□ Hepatitis C screening</li> <li>□ HIV screening</li> <li>□ Kidney disease education</li> <li>□ Lung cancer with low dose computed tomography (LDCT) screening</li> <li>□ Medical nutrition therapy services</li> </ul>

## Medical benefits

### In-network and out-of-network

- |   |  |
|---|--|
| <ul style="list-style-type: none"> <li>□ Medicare Diabetes Prevention Program (MDPP)</li> <li>□ Obesity screenings and counseling</li> <li>□ Prostate cancer screenings (PSA)</li> <li>□ Sexually transmitted infections screenings and counseling</li> <li>□ Tobacco use cessation counseling (counseling for</li> </ul> | <ul style="list-style-type: none"> <li>people with no sign of tobacco-related disease)</li> <li>□ Vaccines, including those for the flu, Hepatitis B, pneumonia, or COVID-19</li> <li>□ “Welcome to Medicare” preventive visit (one-time)</li> </ul> |
|---|--|

Any additional preventive services approved by Medicare during the contract year will be covered.

This plan covers preventive care screenings and annual physical exams at 100%.

### Emergency care

\$50 copay (worldwide)

If you are admitted to the hospital within 24 hours, you pay the inpatient hospital cost sharing instead of the emergency care copay. See the “Inpatient Hospital Care” section of this booklet for other costs.

### Urgently needed services

\$0 copay (worldwide)

If you are admitted to the hospital within 24 hours, you pay the inpatient hospital cost sharing instead of the urgently needed services copay. See the “Inpatient Hospital Care” section of this booklet for other costs.

### Diagnostic tests, lab and radiology services, and X-rays

Diagnostic radiology services (e.g. MRI, CT scan)<sup>1</sup> \$0 copay

Lab services<sup>1</sup> \$0 copay

Diagnostic tests and procedures<sup>1</sup> \$0 copay

Therapeutic radiology<sup>1</sup> \$0 copay

Outpatient X-rays<sup>1</sup> \$0 copay

Medical benefits		
		In-network and out-of-network
<b>Hearing services</b>	Exam to diagnose and treat hearing and balance issues <sup>1</sup>	\$0 copay
	Routine hearing exam	\$0 copay, 1 exam per plan year*
	Hearing Aids UnitedHealthcare Hearing	Through UnitedHealthcare Hearing, the plan pays a \$1,000 allowance for hearing aids (combined for both ears) every 3 years. Hearing aid coverage under this plan is only available through UnitedHealthcare Hearing.
<b>Vision services</b>	Exam to diagnose and treat diseases and conditions of the eye <sup>1</sup>	\$0 copay
	Eyewear after cataract surgery	\$0 copay
	Routine eye exam	\$0 copay, 1 exam every 12 months*
	Routine eyewear	Plan pays up to \$300 combined allowance for eyeglasses and contact lenses every 12 months.*
<b>Mental Health</b>	Inpatient visit <sup>1</sup>	\$0 copay per stay, up to 190 days  Our plan covers 190 days for an inpatient hospital stay.
	Outpatient group therapy visit <sup>1</sup>	\$0 copay
	Outpatient individual therapy visit <sup>1</sup>	\$0 copay
	Virtual behavioral visits	\$0 copay
<b>Skilled nursing facility (SNF)<sup>1</sup></b>		\$0 copay per day: days 1-20 \$0 copay per day: days 21-100  Our plan covers up to 100 days in a SNF per benefit period.

<b>Medical benefits</b>		
		<b>In-network and out-of-network</b>
<b>Outpatient Rehabilitation (physical, occupational, or speech/language therapy)<sup>1</sup></b>		\$0 copay
<b>Ambulance<sup>2</sup></b>		\$0 copay
<b>Routine transportation</b>		Not covered
<b>Medicare Part B Drugs</b>	Chemotherapy drugs <sup>1</sup>	\$0 copay
Part B drugs may be subject to Step Therapy. See your Evidence of Coverage for details.	Other Part B drugs <sup>1</sup>	\$0 copay

Additional benefits		
		In-network and out-of-network
<b>Acupuncture services</b>	Medicare-covered acupuncture (for chronic low back pain)	\$0 copay
<b>Chiropractic services</b>	Medicare-covered chiropractic care (manual manipulation of the spine to correct subluxation) <sup>1</sup>	\$0 copay
<b>Diabetes management</b>	Diabetes monitoring supplies <sup>1</sup>	<p>\$0 copay</p> <p>We only cover Accu-Chek® and OneTouch® brands.</p> <p>Covered glucose monitors include: OneTouch Verio Flex®, OneTouch Verio Reflect®, OneTouch® Verio, OneTouch® Ultra 2, Accu-Chek® Guide Me, and Accu-Chek® Guide.</p> <p>Test strips: OneTouch Verio®, OneTouch Ultra®, Accu-Chek® Guide, Accu-Chek® Aviva Plus, and Accu-Chek® SmartView.</p> <p>Other brands are not covered by your plan.</p>
	Medicare covered Continuous Glucose Monitors (CGMs) and supplies <sup>1</sup>	\$0 copay
	Diabetes self-management training	\$0 copay
	Therapeutic shoes or inserts <sup>1</sup>	\$0 copay
<b>Durable Medical Equipment (DME) and Related Supplies</b>	Durable Medical Equipment (e.g., wheelchairs, oxygen) <sup>1</sup>	\$0 copay

Additional benefits		
		In-network and out-of-network
	Prosthetics (e.g., braces, artificial limbs) <sup>1</sup>	\$0 copay
<b>Fitness program</b> Renew Active® by UnitedHealthcare		<p>\$0 copay for Renew Active® by UnitedHealthcare, the gold standard in Medicare fitness programs for body and mind. It includes a free gym membership at a fitness location you select from our nationwide network, online classes, content about brain health and fun social activities. Visit <a href="http://UHCRenewActive.com">UHCRenewActive.com</a> to learn more today.</p> <p>Once you become a member you will need a confirmation code. Log in to your plan website, go to Health &amp; Wellness and select Renew Active or call the number on your UnitedHealthcare member ID card to obtain your code.</p>
<b>Foot care (podiatry services)</b>	Foot exams and treatment <sup>1</sup>	\$0 copay
	Routine foot care	\$0 copay, 6 visits per plan year*
<b>Over-the-counter (OTC) card</b> Healthy Benefits Plus		<p>\$0 copay</p> <p>\$60 credit each quarter (\$240 a year) to purchase approved OTC items from network retail locations or through the OTC catalog. Credits expire at the end of the year. Shop in store, call or go online. 1-833-216-6709, TTY 711, visit <a href="http://HealthyBenefitsPlus.com/UHCRetiree">HealthyBenefitsPlus.com/UHCRetiree</a>, or download the Healthy Benefits Plus app.</p>



Additional benefits		
		In-network and out-of-network
<b>UnitedHealthcare</b> Healthy at Home		<p>\$0 copay for the following benefits for up to 30 days after each inpatient and SNF discharge:</p> <ul style="list-style-type: none"> <li><input type="checkbox"/> 28 home-delivered meals*</li> <li><input type="checkbox"/> 12 one-way trips to medically related appointments and the pharmacy*</li> <li><input type="checkbox"/> 6 hours of non-medical personal care services - a professional caregiver can help with preparing meals, companionship, medication reminders, and more. No referral required.</li> </ul> <p>Call the customer service number on your UnitedHealthcare member ID card for more information and to use your benefits.</p> <p>*Call Customer Service to request a referral for each discharge.</p> <p>Some restrictions and limitations may apply.</p>
<b>Home health care</b> <sup>1</sup>		\$0 copay
<b>Hospice</b>		You pay nothing for hospice care from any Medicare-approved hospice. You may have to pay part of the costs for drugs and respite care. Hospice is covered by Original Medicare, outside of our plan.
<b>Personal emergency response system (PERS)</b> Lifeline		<p>\$0 copay for a personal emergency response system.</p> <p>Help is only a button press away. A PERS wearable device can quickly connect you to the help you need, 24 hours a day in any situation. Call or go online to order your device. 1-855-595-8485, TTY 711 or <a href="http://lifeline.com/uhcgroup">lifeline.com/uhcgroup</a></p>
<b>24/7 Nurse Support</b>		Receive access to nurse consultations and additional clinical resources at no additional cost.
<b>Opioid treatment program services</b> <sup>1</sup>		\$0 copay
<b>Outpatient substance abuse</b>	Outpatient group therapy visit <sup>1</sup>	\$0 copay
	Outpatient individual therapy visit <sup>1</sup>	\$0 copay

## Additional benefits

	In-network and out-of-network
<b>Rally Coach™ Programs</b>	<p>\$0 copay for Rally Coach™ programs: Real Appeal® Weight Management, Real Appeal Diabetes Prevention, Wellness Coaching and a tobacco cessation program.</p> <p>Call or go online to get started today. rallyhealth.com/retiree</p> <ul style="list-style-type: none"><li>• Real Appeal 1-844-924-7325, TTY 711</li><li>• Rally Wellness Coaching 1-800-478-1057, TTY 711</li><li>• Tobacco Cessation 1-866-784-8454, TTY 711</li></ul> <p>* Refer to your Evidence of Coverage for eligibility requirements</p>
<b>Renal Dialysis<sup>1</sup></b>	\$0 copay

<sup>1</sup> Some of the network benefits listed may require your provider to obtain prior authorization. You never need approval in advance for plan covered services from out-of-network providers. Please refer to the Evidence of Coverage for a complete list of services that may require prior authorization.

<sup>2</sup> Authorization is required for non-emergency Medicare-covered ambulance ground and air transportation. Emergency ambulance does not require authorization.

\*Benefits are combined in and out-of-network

## About this plan

UnitedHealthcare® Group Medicare Advantage (PPO) is a Medicare Advantage PPO plan with a Medicare contract.

To join this plan, you must be entitled to Medicare Part A, be enrolled in Medicare Part B, live in our service area as listed below, be a United States citizen or lawfully present in the United States, and meet the eligibility requirements of your former employer, union group or trust administrator (plan sponsor).

Our service area includes the 50 United States, the District of Columbia and all US territories.

## About providers

UnitedHealthcare® Group Medicare Advantage (PPO) has a network of doctors, hospitals, and other providers. You can see any provider (network or out-of-network) at the same cost share, as long as they accept the plan and have not opted out of or been excluded or precluded from the Medicare Program.

You can go to [retiree.uhc.com/CTPF](https://retiree.uhc.com/CTPF) to search for a network provider using the online directory.

## Required Information

UnitedHealthcare® Group Medicare Advantage (PPO) is insured through UnitedHealthcare Insurance Company or one of its affiliated companies, a Medicare Advantage organization with a Medicare contract. Enrollment in the plan depends on the plan's contract renewal with Medicare.

Plans may offer supplemental benefits in addition to Part C benefits.

If you want to know more about the coverage and costs of Original Medicare, look in your current "Medicare & You" handbook. View it online at [www.medicare.gov](http://www.medicare.gov) or get a copy by calling 1-800-MEDICARE (1-800-633-4227), 24 hours a day, 7 days a week. TTY users should call 1-877-486-2048.

UnitedHealthcare does not discriminate on the basis of race, color, national origin, sex, age, or disability in health programs and activities.

UnitedHealthcare provides free services to help you communicate with us such as documents in other languages, Braille, large print, audio, or you can ask for an interpreter. For more information, please call Customer Service at the number on your member ID card or the front of your plan booklet.

UnitedHealthcare ofrece servicios gratuitos para ayudarle a que se comunique con nosotros. Por ejemplo, documentos en otros idiomas, braille, en letra grande o en audio. O bien, usted puede pedir un intérprete. Para obtener más información, llame a Servicio al Cliente al número que se encuentra en su tarjeta de ID de miembro o en la portada de la guía de su plan.

This information is available for free in other languages. Please call our Customer Service number located on the first page of this book.

Benefits, features and/or devices vary by plan/area. Limitations and exclusions may apply.

The provider network may change at any time. You will receive notice when necessary.

You must continue to pay your Medicare Part B premium.

Out-of-network/non-contracted providers are under no obligation to treat UnitedHealthcare members, except in emergency situations. Please call our customer service number or see your Evidence of Coverage for more information, including the cost-sharing that applies to out-of-network services.

24/7 Nurse Support should not be used for emergency or urgent care needs. In an emergency, call 911 or go to the nearest emergency room. The information provided through this service is for informational purposes only. The nurses cannot diagnose problems or recommend treatment and are not a substitute for your doctor's care. Your health information is kept confidential in accordance with the law. Access to this service is subject to terms of use.

Participation in the Renew Active® program is voluntary. Consult your doctor prior to beginning an exercise program or making changes to your lifestyle or health care routine. Renew Active includes standard fitness membership and other offerings. Fitness membership, equipment, classes, personalized fitness plans, caregiver access and events may vary by location. Certain services, classes, events and online fitness offerings are provided by affiliates of UnitedHealthcare Insurance Company or other third parties not affiliated with UnitedHealthcare. Participation in these third-party services are subject to your acceptance of their respective terms and policies. AARP® Staying Sharp is the registered trademark of AARP. UnitedHealthcare is not responsible for the services or information provided by third parties. The information provided through these services is for informational purposes only and is not a substitute for the advice of a doctor. The Renew Active program varies by plan/area. Access to gym and fitness location network may vary by location and plan.

## Civil Rights Notice

**The company complies with applicable federal civil rights laws and does not treat members differently because of sex, age, race, color, disability, or national origin.**

If you think you were treated unfairly because of your sex, age, race, color, disability, or national origin, you can send a complaint to our Civil Rights Coordinator.

- **Online:** [UHC\\_Civil\\_Rights@uhc.com](mailto:UHC_Civil_Rights@uhc.com)
- **Mail:** Civil Rights Coordinator  
UnitedHealthcare Civil Rights Grievance  
P.O. Box 30608  
Salt Lake City, UT 84130

You must send the complaint within 60 days of when you found out about it. A decision will be sent to you within 30 days. If you disagree with the decision, you have 15 days to ask us to look at it again. If you need help with your complaint, please call the toll-free phone number listed on the front of the booklet or your membership identification card (TTY **711**).

You can also file a complaint with the U.S. Dept. of Health and Human Services.

- **Online:** <https://www.hhs.gov/civil-rights/filing-a-complaint/index.html>
- **Phone:** Toll-free **1-800-368-1019, 800-537-7697** (TDD)
- **Mail:** U.S. Department of Health and Human Services  
200 Independence Ave SW  
HHH Building, Room 509F  
Washington, D.C. 20201

We provide free services to help you communicate with us. Such as, letters in other languages or large print. Or you can ask for an interpreter. To ask for help, please call the toll-free phone number listed on the front of the booklet or your membership identification card (TTY **711**), Monday through Friday, 8 a.m. to 8 p.m. ET.

## Multi-language Interpreter Services

**English:** We have free interpreter services to answer any questions you may have about our health or drug plan. To get an interpreter, please call us using the toll-free number listed on the front of the booklet. Someone who speaks your language can help you. This is a free service.

**Spanish:** Contamos con servicios gratuitos de intérprete para responder cualquier pregunta que pudiera tener sobre nuestro plan de salud o de medicamentos. Para obtener los servicios de un intérprete, llámenos al número de teléfono gratuito que figura en la portada del folleto. Una persona que habla su idioma podrá ayudarle. Es un servicio gratuito.

**Chinese Mandarin:** 我们提供免费口译服务，解答您对我们的健康或药物计划的任何疑问。如需寻找一名口译员，请使用宣传册前面列出的免费电话号码联系我们。一名与您讲相同语言的人可以为您提供帮助。这是一项免费服务。

**Chinese Cantonese:** 我們提供免費的口譯服務，可回答您可能對我們的健康或藥物計劃的任何問題。如需口譯員，請撥打本手冊正面的免付費電話號碼聯絡我們。會說您的語言的人可協助您。這是免費服務。

**Tagalog:** Mayroon kaming libheng serbisyo ng interpreter para sagutin anumang tanong na maaaring mayroon ka tungkol sa kalusugan o plano ng gamot. Para makakuha ng interpreter, pakitawagan kami gamit ang libheng numerong nakalista sa harapan ng booklet. Sinumang nagsasalita ng wika mo ay puwedeng makatulong sa iyo. Ang serbisyonang ito ay libre.

**French:** Nous disposons de services d'interprétation gratuits pour répondre à toutes les questions que vous pourriez vous poser sur notre régime d'assurance maladie ou d'assurance-médicaments. Pour recevoir l'aide d'un interprète, veuillez nous appeler en composant le numéro gratuit figurant sur votre carte d'identification de membre. Quelqu'un parlant votre langue peut vous aider. Ce service est gratuit.

**Vietnamese:** Chúng tôi có dịch vụ thông dịch viên miễn phí để trả lời các câu hỏi mà bạn có về chương trình sức khỏe hay thuốc của chúng tôi. Để gặp thông dịch viên, vui lòng gọi cho chúng tôi theo số điện thoại được liệt kê ở mặt trước của quyển sách nhỏ (booklet). Người nói cùng ngôn ngữ với bạn có thể giúp bạn. Đây là dịch vụ miễn phí.

**German:** Wir verfügen über kostenlose Dolmetscherdienste, um alle Fragen zu beantworten, die Sie über unseren Gesundheits- oder Medikamentenplan haben mögen. Um einen Dolmetscher zu erhalten, rufen Sie uns bitte unter der kostenfreien Nummer an, die auf der Vorderseite der Broschüre aufgeführt ist. Jemand, der Ihre Sprache spricht, kann Ihnen helfen. Dies ist eine kostenlose Dienstleistung.

**Korean:** 건강 또는 의약품 플랜에 관한 질문에 답변해드리기 위해 무료 통역 서비스를 제공합니다. 통역 서비스를 이용하려면, 책자 앞면에 있는 수신자 부담 전화번호로 전화해 주십시오. 한국어를 사용하는 통역사가 도움을 드릴 수 있습니다. 이 서비스는 무료입니다.

**Russian:** Если у Вас возникнут какие-либо вопросы о нашем плане медицинского страхования или плане по приобретению препаратов, мы предоставим Вам бесплатные услуги устного перевода. Для того чтобы воспользоваться услугами устного перевода, пожалуйста, свяжитесь с нами по бесплатному номеру телефона, указанному на лицевой стороне брошюры. Сотрудник, который говорит на Вашем языке, сможет Вам помочь. Данная услуга предоставляется бесплатно.

**Arabic:** لدينا خدمات ترجمة فورية للرد على أي أسئلة قد تكون لديك حول الخطة الصحية أو خطة الأدوية الخاصة بنا . للحصول على مترجم، من فضلك اتصل بنا باستخدام رقم الهاتف المجاني الموجود على الجزء الأمامي من الكتيب . سيساعدك شخص ما يتحدث لغتك . هذه خدمة مجانية .

**Hindi:** हमारे स्वास्थ्य या दवा प्लान के बारे में आपके किसी भी परश्न का उत्तर देने के लिए हमारे पास मुफ्त दुभाषिया सेवाएं मौजूद हैं। दुभाषिया पाने के लिए, कृपया इस बुकलेट के सामने वाले भाग में सूचीबद्ध टोल- फ्री नंबर का उपयोग करके हमें कॉल करें। आपकी भाषा बोलने वाला कोई व्यक्ति आपकी मदद कर सकता है। यह एक निःशुल्क सेवा है।

**Italian:** Mettiamo a disposizione un servizio di interpretariato gratuito per rispondere a eventuali domande sul nostro piano sanitario o farmaceutico. Per avvalersi di un interprete, si prega di chiamare il numero verde riportato nella parte anteriore dell'opuscolo. Una persona che parla italiano potrà fornire l'assistenza richiesta. Il servizio è gratuito.

**Portuguese:** Dispomos de serviços de intérprete gratuitos para esclarecer quaisquer dúvidas que tenha sobre o nosso plano de saúde ou medicação. Para obter um intérprete, contacte-nos através do número gratuito indicado na parte da frente da brochura. Alguém que fala a sua língua pode ajudá-lo(a). Este é um serviço gratuito.

**French Creole:** Nou gen sèvis entèprèt gratis pou reponn tout kesyon ou gendwa genyen konsènan plan sante oswa medikaman nou an. Pou jwenn yon entèprèt, tanpri rele nou apati nimewo gratis pou apèl ki sou lis devan livrè an. Yon moun ki pale lang ou ka ede ou. Sa se yon sèvis gratis.

**Polish:** Oferujemy bezpłatne usługi tłumaczeniowe, aby odpowiedzieć na wszelkie pytania dotyczące naszego planu ubezpieczenia zdrowotnego lub planu refundacji leków. Aby skorzystać z pomocy tłumacza, proszę zadzwonić pod bezpłatny numer telefonu podany na pierwszej stronie broszury. Osoba posługująca się Pana/Pani językiem Panu/Pani pomoże. Usługa ta jest bezpłatna.

**Japanese:** 当社の医療または処方薬プランに関する質問にお答えするために、無料の通訳サービスをご利用いただけます。通訳が必要な場合には、本冊子の表面に記載されているフリーダイヤル番号を使用して、当社までお問い合わせください。お客様の言語を話す通訳者がお手伝いいたします。これは無料のサービスです。

This page left intentionally blank.



# What's next

# Here's What You Can Expect Next

## UnitedHealthcare will process your enrollment

**Quick Start Guide and UnitedHealthcare member ID card** We will mail you a Quick Start Guide 7–10 days after your enrollment is approved and a UnitedHealthcare member ID card. **Please note, your member ID card will be attached to the front cover of your guide.**

---

**Website access** After you receive your member ID card, you can register online at the website listed below to get access to plan information.

---

**Health assessment** In the first 90 days after your plan's effective date, we'll give you a call. Medicare requires us to call and ask you to complete a short health survey. You can also go to the website below and take the survey online.

**Start using your plan on your effective date.** Remember to use your UnitedHealthcare member ID card.

## We're here for you


When you call, be sure to let the Customer Service Advocate know that you're calling about a group-sponsored plan. In addition, it will be helpful to have:

- ✓ **Your group number found on the front of this book**
- ✓ **Medicare number and Medicare effective date — you can find this information on your red, white and blue Medicare card**
- ✓ **Names and addresses for your doctors and clinics**

## Questions? We're here to help.

Please note, Customer Service hours of operation will be **7 days a week October 15 – December 7.**

 [retiree.uhc.com/CTPF](http://retiree.uhc.com/CTPF)

 Call toll-free **1-866-572-9396**, TTY **711**,  
8 a.m.–8 p.m. local time, Monday–Friday

# Statements of understanding

By enrolling in this plan, I agree to the following:

- ✓ **This is a Medicare Advantage Plan contracted with the federal government. This is not a Medicare Supplement plan.**

I need to keep my Medicare Part A and Part B, and continue to pay my Medicare Part B and, if applicable, Part A premiums, if they are not paid for by Medicaid or a third party. To be eligible for this plan, I must live in the plan's service area and be a United States citizen or be lawfully present in the U.S.

- ✓ **The service area includes the 50 United States, the District of Columbia and all U.S. territories.**

I may not be covered while out of the country, except for limited coverage near the U.S. border. However, under this plan, when I am outside of the U.S. I am covered for emergency or urgently needed care.

- ✓ **I can only have one Medicare Advantage Plan at a time.**

- Enrolling in this plan will automatically disenroll me from any other Medicare health plan.
- If I enroll in a different Medicare Advantage Plan, I will be automatically disenrolled from this plan.
- If I disenroll from this plan, I will be automatically transferred to Original Medicare.
- Enrollment in this plan is for the entire plan year. I may leave this plan only at certain times of the year or under special conditions.

- ✓ **My information will be released to Medicare and other plans, only as necessary, for treatment, payment and health care operations.**

Medicare may also release my information for research and other purposes that follow all applicable federal statutes and regulations.

- ✓ **For members of the Group Medicare Advantage Plan.**

I understand that when my coverage begins, I must get all of my medical benefits from the plan. Benefits and services provided by the plan and contained in the Evidence of Coverage (EOC) document will be covered. Neither Medicare nor the plan will pay for benefits or services that are not covered.

- ✓ **I give consent for all entities under UnitedHealthcare, its affiliates, and any outside vendor used by UnitedHealthcare to call the phone number(s) I have provided using an autodialer and/or prerecorded voice.**

This page left intentionally blank.









Call toll-free **1-866-572-9396**, TTY **711**  
8 a.m.-8 p.m. local time, Monday-Friday



[retiree.uhc.com/CTPF](https://retiree.uhc.com/CTPF)

**United  
Healthcare<sup>®</sup>**  
Group Medicare Advantage

